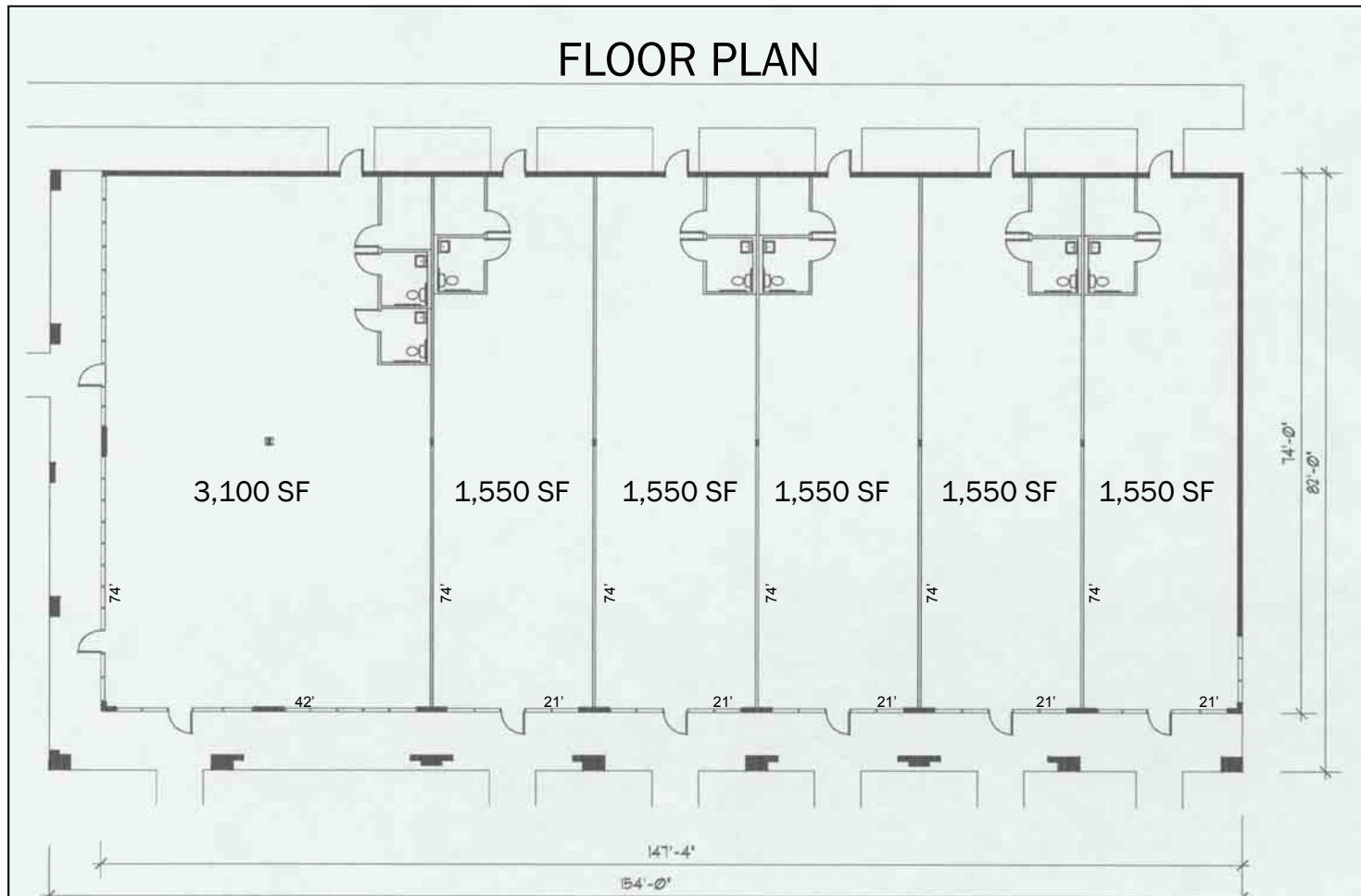


PLANTATION PLAZA



1,550 SF Bays (21' x 74') with Covered Walkway



Licensed Real Estate Broker

FOR FURTHER INFORMATION, PLEASE CONTACT:

CONTACT: Karen Goncalves
PHONE: 239-693-1000, x21
EMAIL: KarenGoncalves@BundschuKraft.com

6700-1 DANIELS PARKWAY ♦ FORT MYERS, FL 33912 ♦ 239.693.1000 ♦ 239.693.0100 (FAX) ♦ www.BundschuKraft.com

The information contained herein has been obtained from sources believed reliable and we believe it to be true. However, no warranty or representation, express or implied, is made as to its accuracy. This offering is subject to errors, omissions, revisions, withdrawal, prior sale or lease, all without notice. 6700 Retail Floor Plan, 7-6-04.pub